

**2011
National Judge
Ann Hudson**



Ann Hudson's first book, *The Armillary Sphere*, won the Hollis Summers Poetry Prize and was published by Ohio University Press. Her poems have appeared in many literary journals, including *Crab Orchard Review*, *Iris*, *North American Review*, *Prairie Schooner*, and *The Seattle Review*. She grew up in Charlottesville, Virginia, and now lives in Chicago with her husband and children.



**2011
Regional Judge
Erin Bertram**

Erin M. Bertram is the author of seven chapbooks, including *Inland Sea*, which won the 2009 Robin Becker Chapbook Prize, and *Body of Water*, which won the 2007 Frank O'Hara Award. A past recipient of an Academy of American Poets Prize, a Lettre Sauvage Poetry Prize, and two fellowships from Washington University in St. Louis, her poems have appeared in *Hotel Amerika*, *Copper Nickel*, *Agni*, *The Laurel Review*, and elsewhere, and are forthcoming in the anthology *Narrative (Dis)Continuities: Prose Experiments by Younger American Writers*. She is a book reviewer for *Pleiades* and *Rain Taxi Review of Books*, and a prison-writing mentor through PEN American Center. This year and next, she is a Fellowship Instructor in English at Augustana College.

Past Winners:

2010 Ryan Walsh
The Sinks

2009 Meghan Brinson,
Broken Plums on the Sidewalk

2008 Stephen Frech,
The Dark Villages of Childhood



225 E. 2nd Street
Suite 303
Davenport, IA 52801

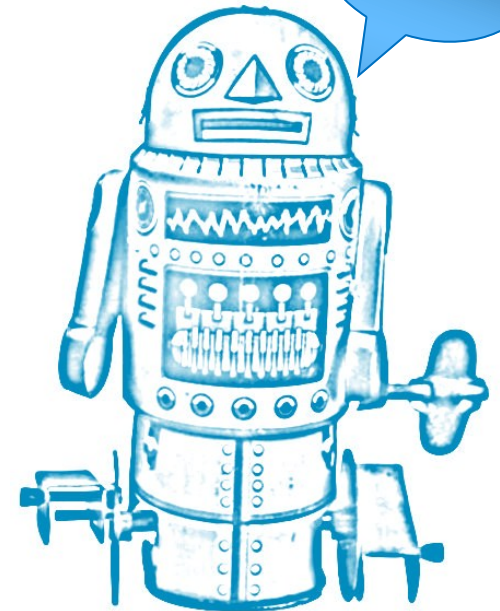
Restrictions

As a member of the Council of Literary Magazines and Presses and CLMP's community of independent literary publishers, Midwest Writing Center believes that intent to act ethically, clarity of guidelines, and transparency of process form the foundation of an ethical contest. To that end, friends, relatives, and/or past or current students of judges have been deemed ineligible to enter this contest, as have past and current board members and employees of Midwest Writing Center.



**4th
Annual
Mississippi Valley
Poetry Chapbook
Contest
2011**

Now with 2
Categories!





Midwest Writing Center Press

Midwest Writing Center is a nonprofit literary organization located in Davenport, Iowa, primarily serving western Illinois and eastern Iowa with a mission of

“fostering appreciation of the written word, supporting and educating its creators.”

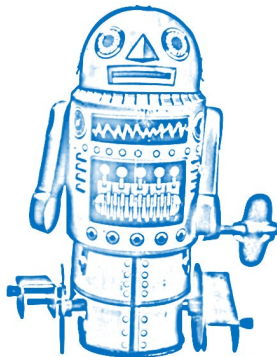
We promote new literary voices as well as work from previously published writers. The MWC is a resource for readers and writers alike.

We are a 501 (c) (3) not-for-profit corporation and a member of the Council of Literary Magazines and Presses.

For information about membership please visit our website at:

www.midwestwritingcenter.org

or call 563-324-1410



Contest Rules

For National or Regional contests, submit between 16 to 24 pages of poetry; manuscripts should be paginated and secured with a binder clip (no staples). No names should appear on the poems. Enclose two cover pages: first includes chapbook title, author's name, address, phone, and email address. The second includes only the chapbook title to allow for blind review. No cover letter is required; however, if poems have been previously published, an acknowledgment page should be included. Poems may be more than one page in length, but only one poem per page. Midwest Writing Center will publish and make the winning chapbook available for sale. No manuscripts will be returned. Submissions that arrive 'postage due' will be returned unopened. Please indicate whether you are entering your poetry into the national or regional contest and follow the guidelines for regional submissions.

Contact/Submission Information

Submissions should be sent directly to Midwest Writing Center. If you wish to receive written notification of the contest results please include a self-addressed, stamped envelope. To receive a copy of the winning chapbook in either the National or Regional contest, please include a check for \$4. If you wish to receive copies of the winning chapbooks in BOTH the National and Regional contests, please include a check for \$6. Contact the contest administrators with any questions by emailing: contest@midwestwritingcenter.org with the word “chapbook:” in the subject line.

Deadline Dates

Submissions must be postmarked
May 1, 2011—July 31, 2011

Prizes

The winners of the 2011 Mississippi Valley Poetry Chapbook Contest will each receive \$100 prize money, have his/her manuscript published by Midwest Writing Center Press, and receive 15 free copies of the finished chapbook.

Entry Fee Information

There is a \$15 submission fee per chapbook entry (multiple submissions accepted).

Methods of Payment

Checks payable to MWC should be mailed along with your manuscript to:

Midwest Writing Center
Mississippi Valley Poetry
Chapbook Contest
225 E. 2nd St., Suite 303
Davenport, IA 52801

Pay via PayPal on the contest's web page and MasterCard and Visa are also accepted. Please send your name as it appears on the card, the card number, expiration date, and v-code along with your manuscript.

Regional Category Submissions

The regional contest will be for residents of Iowa and Illinois, who will need to submit a copy of their drivers license or utility bill (with financial information blacked out) as proof of residence.

Cost to enter either contest is the same, and we will announce the winners in January 2012.

Poets who submit will also be asked to submit their work via Submission Manager at:
<http://midwestwritingcenter.org/submissions/>

